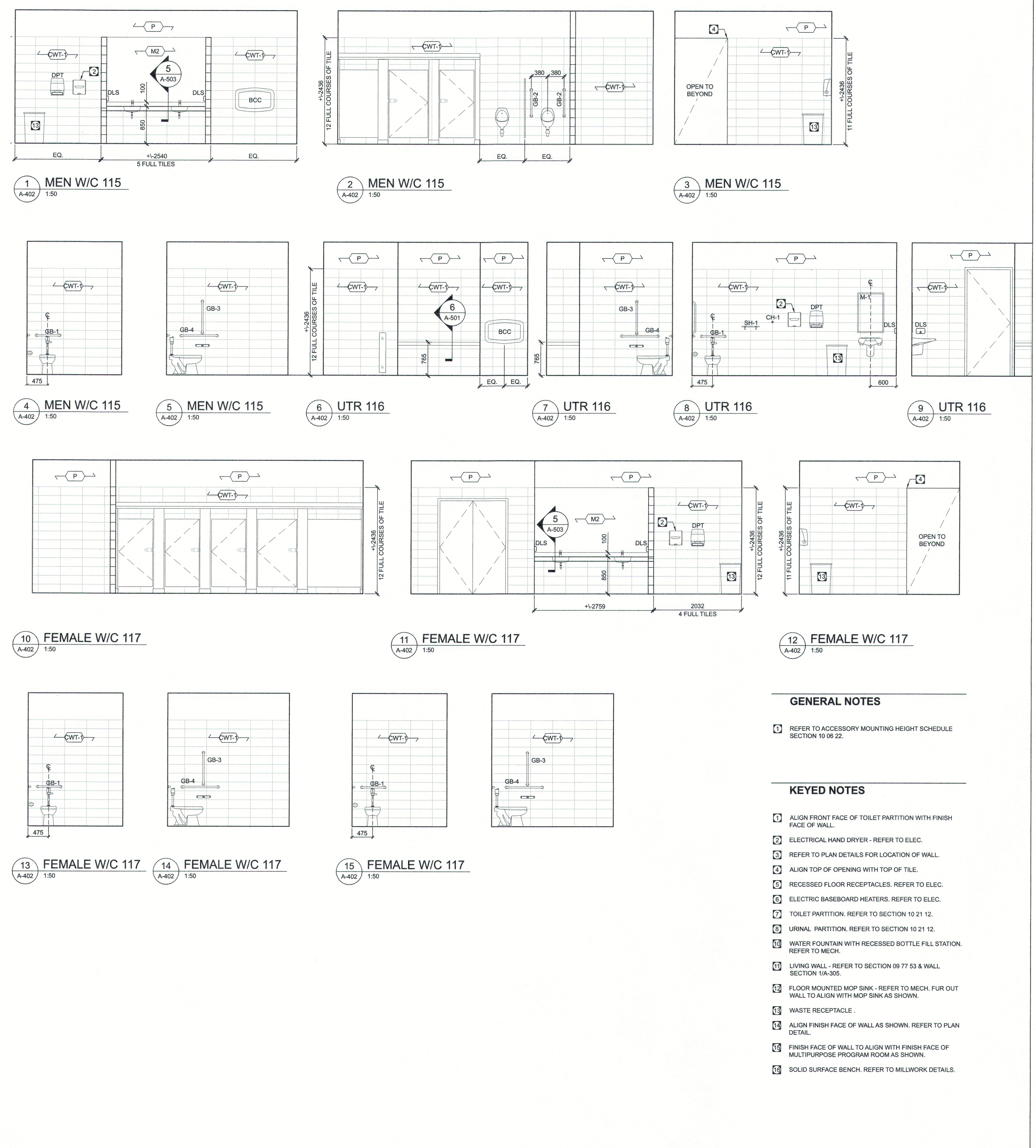


1 ENLARGED PLAN - EAST
A-402 1:50



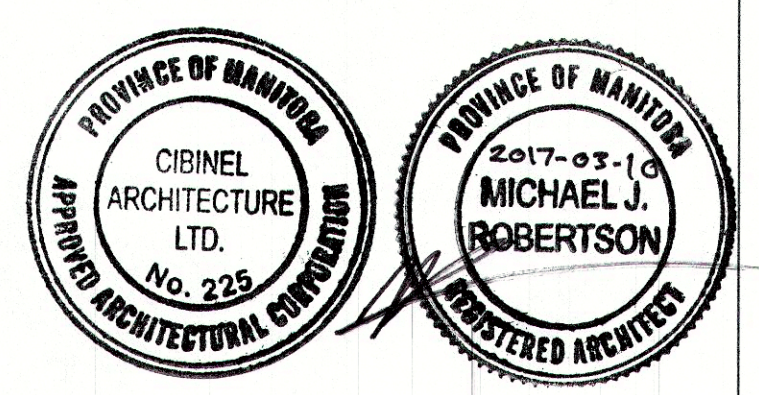
GENERAL NOTES

- 1 REFER TO ACCESSORY MOUNTING HEIGHT SCHEDULE SECTION 10 06 22.

KEYED NOTES

- 1 ALIGN FRONT FACE OF TOILET PARTITION WITH FINISH FACE OF WALL.
- 2 ELECTRICAL HAND DRYER - REFER TO ELEC.
- 3 REFER TO PLAN DETAILS FOR LOCATION OF WALL.
- 4 ALIGN TOP OF OPENING WITH TOP OF TILE.
- 5 RECESSED FLOOR RECEPTACLES. REFER TO ELEC.
- 6 ELECTRIC BASEBOARD HEATERS. REFER TO ELEC.
- 7 TOILET PARTITION. REFER TO SECTION 10 21 12.
- 8 URINAL PARTITION. REFER TO SECTION 10 21 12.
- 9 WATER FOUNTAIN WITH RECESSED BOTTLE FILL STATION. REFER TO MECH.
- 10 LIVING WALL - REFER TO SECTION 09 77 53 & WALL SECTION 1/A-305.
- 11 FLOOR MOUNTED MOP SINK - REFER TO MECH. FUR OUT WALL TO ALIGN WITH MOP SINK AS SHOWN.
- 12 WASTE RECEPTACLE.
- 13 ALIGN FINISH FACE OF WALL AS SHOWN. REFER TO PLAN DETAIL.
- 14 FINISH FACE OF WALL TO ALIGN WITH FINISH FACE OF MULTIPURPOSE PROGRAM ROOM AS SHOWN.
- 15 SOLID SURFACE BENCH. REFER TO MILLWORK DETAILS.

2	2017.03.10	ISSUED FOR ADDENDUM #1
1	2017.02.17	ISSUED FOR CONSTRUCTION
No.	DATE	REVISION / ISSUANCE



Architect
Cibinel Architecture Ltd.
560 ACADEMY ROAD, WINNIPEG, MB R3N 0E3



Project
TRANSCONA LIBRARY
1500 PLESSIS ROAD, WINNIPEG, MB

Sheet Title
ENLARGED PLAN & INTERIOR ELEVATIONS

Sheet No. 1487
A-402